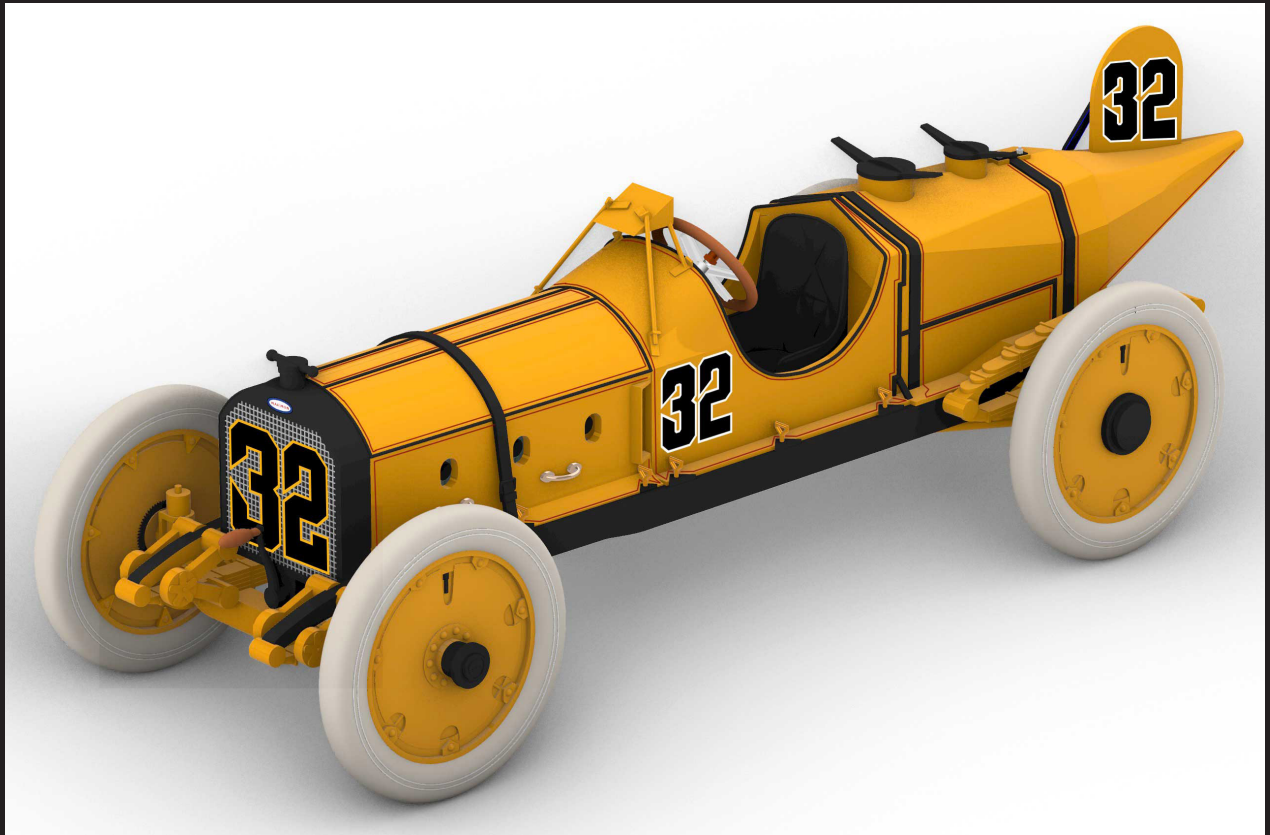


THE WASP

The first 500 mile race winner



1/25 scale full detail,
3d printed model kit

Thank you for purchasing this kit of the historic Marmon Wasp, the car that won the very first 500 mile race. This is also the first full, 3d-printed kit produced by Indycals, and we believe it to be the first Indy car kit developed exclusively using 3d printing technology. We also believe this is the first 1/25 scale kit of the Wasp.

Development of this kit started in December 2014, using 3d design software (Rhinoceros 3D for the Mac). First test prints came in March 2015, and mold making and resin casting started in summer of 2015. The level of precision afforded by 3d design meant that we were able to start production before we were even finished designing. (Final parts were designed in October 2015!)

The first issue of this kit only saw about 50 kits produced before production issues forced us to pause production. That pause lasted approximately seven years before 3d printing technology caught up enough to self-produce this kit.

Looking at the pictures, you may think to yourself, "This looks different than the car in the museum." And there

Recommended paints and colors

Wasp Yellow: Mr Color by Mr. Hobby makes two paints that can be mixed to get a good Wasp Yellow: 329 Yellow and 109 Character Yellow. I recommend of 6/5 ratio of 329/109. If you want to use a spray can, Tamiya Camel Yellow is close, albeit slightly muted compared to the actual color. You can also get a good color blend by decanting Tamiya TS56 and TS34

Semi Gloss Black

Metallic Copper

Metallic Gold

White primer

Black primer

Metallic grey

Silver

Brown: a mix of more than one brown can get a nice wood look for the steering wheel and shifter.

Light Grey recommend Testors Flat Light Aircraft Grey for the tires

Additional colors called out in the build instructions.

is good reason for that. This kit is based on how the car raced, not how it is currently restored. The biggest differences are the shape of the tail, the numbers, and the use of white tires and four front scissor shocks in 1911 vs the black tires and two front scissor shocks it sports now.

Now some of you may have heard debates that the Wasp was not yellow, but orange. My personal belief is that the current color is CORRECT, mostly due to the fact that when it was repainted in the 1950s, Ray Harroun himself supposedly picked out the color. Prior to the 1950s restoration, the Wasp was a VERY pale yellow - there is good color footage of Harroun with the car in 1946 that demonstrates this (Harroun's skin is darker than the car). Supposedly Harroun said "the car was (more orange/pale orange)." I believe this quote was in reference to the pale yellow of the 1940s. By all means, the current color is 'more orange' than pale yellow. In 2023 the Wasp was on display with the engine cover strap removed and the original color on full display where it had not faded - our Mr. Color mix specified below is a very good match.

Tools

Sand paper/sanding sticks - various grits from coarse to fine

Glue (CA/superglue is my choice)

Exacto knife

Good sprue cutters

Magnifying glass

Coffee

Patience

Packing list (refer to parts list on next page)

1 Frame
1 Body
1 Engine Cover
4 Engine cover handles
1 Tail Fin
2 Tail fin supports
1 set of fuel ports
2 fuel caps
1 radiator
1 gearbox/driveshaft
1 engine block
1 cylinder heads
6 pair of valve springs
1 distributor
1 carburetor
1 steering rack
1 steering block
1 steering linkage
2 rear view mirrors (1 extra just in case)
2 rear wheels

1 right front wheel (with gears on inside)
1 left front wheel
2 front wheel caps
1 set of spark plug wires
1 fire extinguisher
1 seat
1 engine crank
2 rear shock absorbers
4 front shock absorbers
1 front axle
2 sets of rear springs
2 front springs
1 gear shifter/handbrake
1 water pipe
1 engine strap
2 fuel tank straps
12 body fasteners

Before you begin:

This kit is for advanced modelers. 3d printed or Resin kit experience is recommended.

Please read the instructions and examine the parts carefully!
Make sure all parts on the parts page are present.

3d printed parts go through a rigorous bath of anhydrous 99% alcohol - there is no need to wash the parts

You will need to remove some support structures for parts. Parts are left attached to help with structural protection during shipping. We recommend very good sprue cutters and patience. We use Tamiya Sprue cutters.

Test fit parts.

Parts may have support structure scarring - we try to place the supports so they don't affect the side that shows, but this isn't always possible - some cleanup may be necessary.

Repeatedly test fit parts.

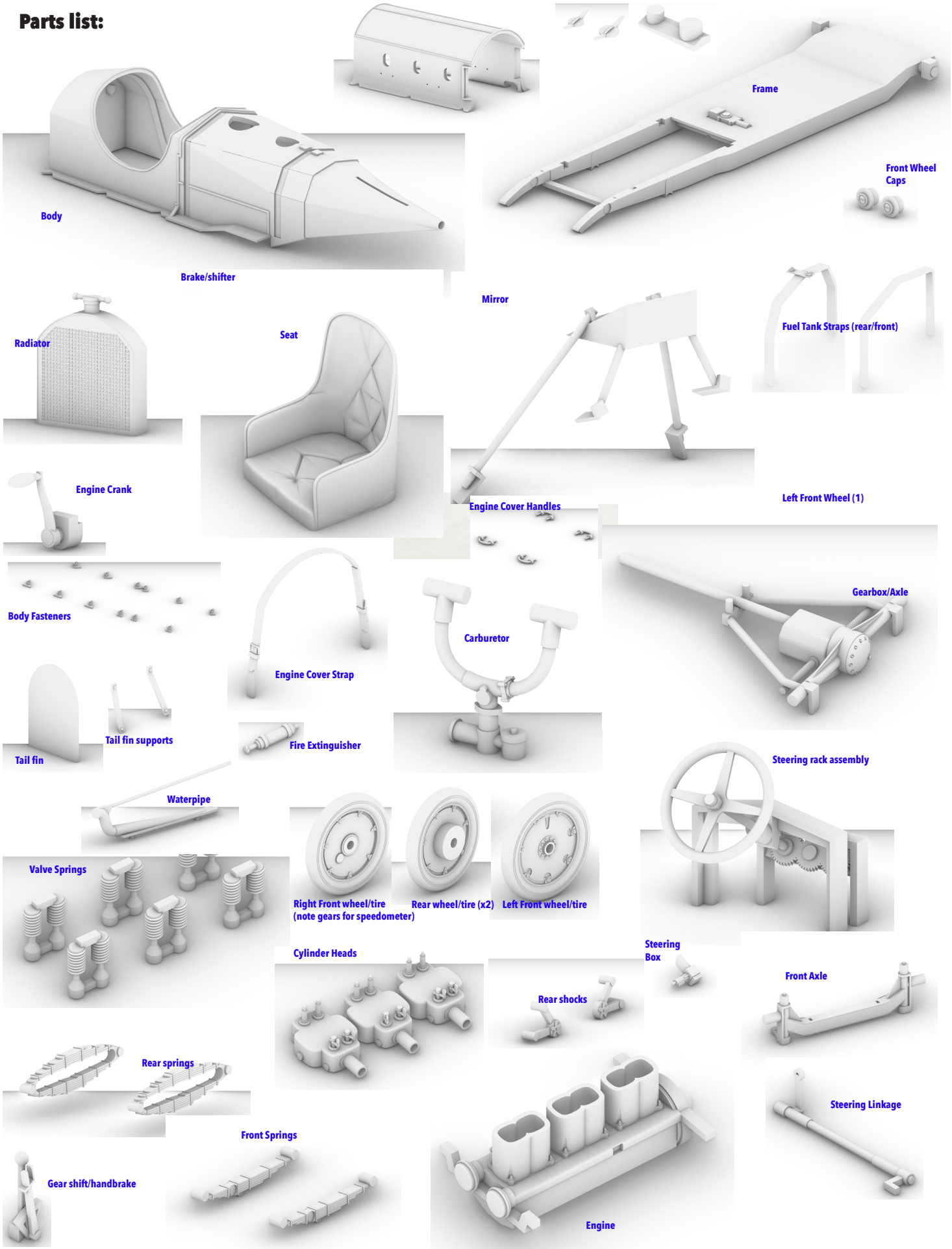
The 3d printed parts are very fragile - particularly the engine cover handles and the body fasteners. Handle with care. There are some extras of some of the more fragile/easy to lose parts

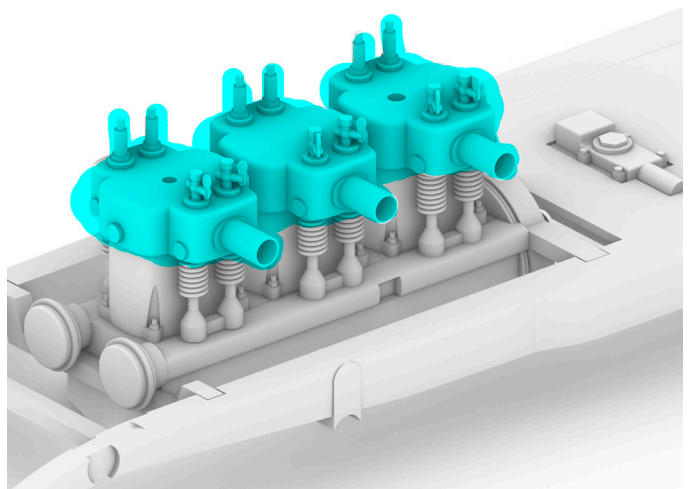
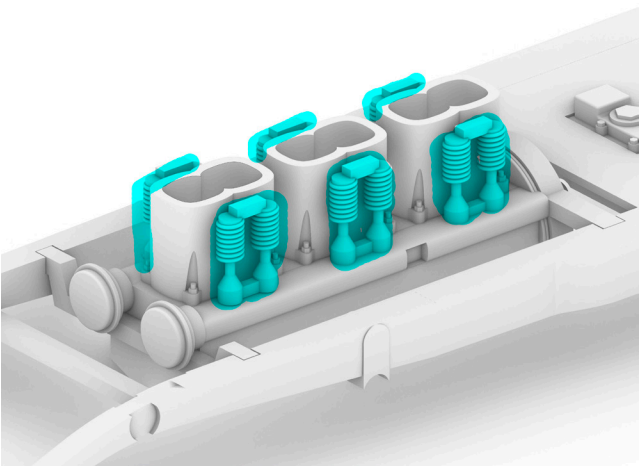
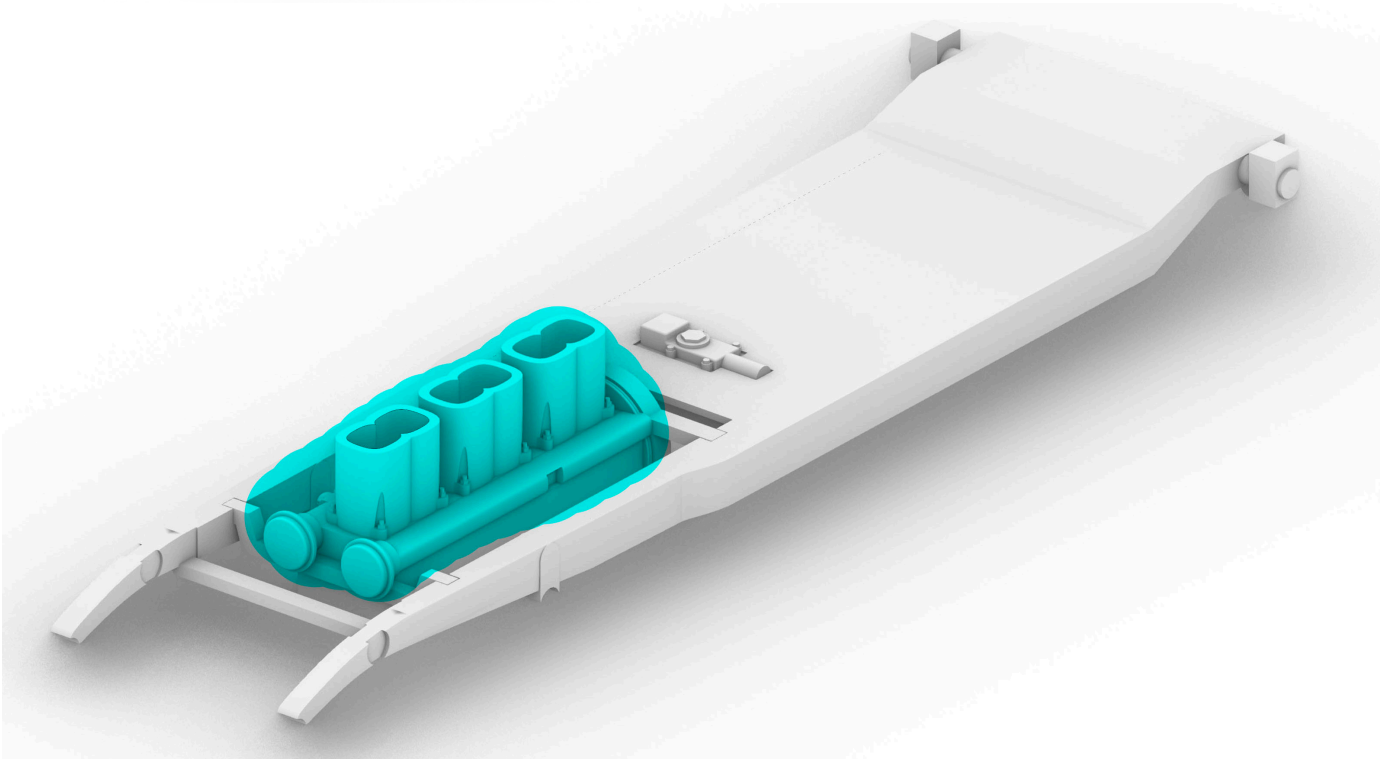
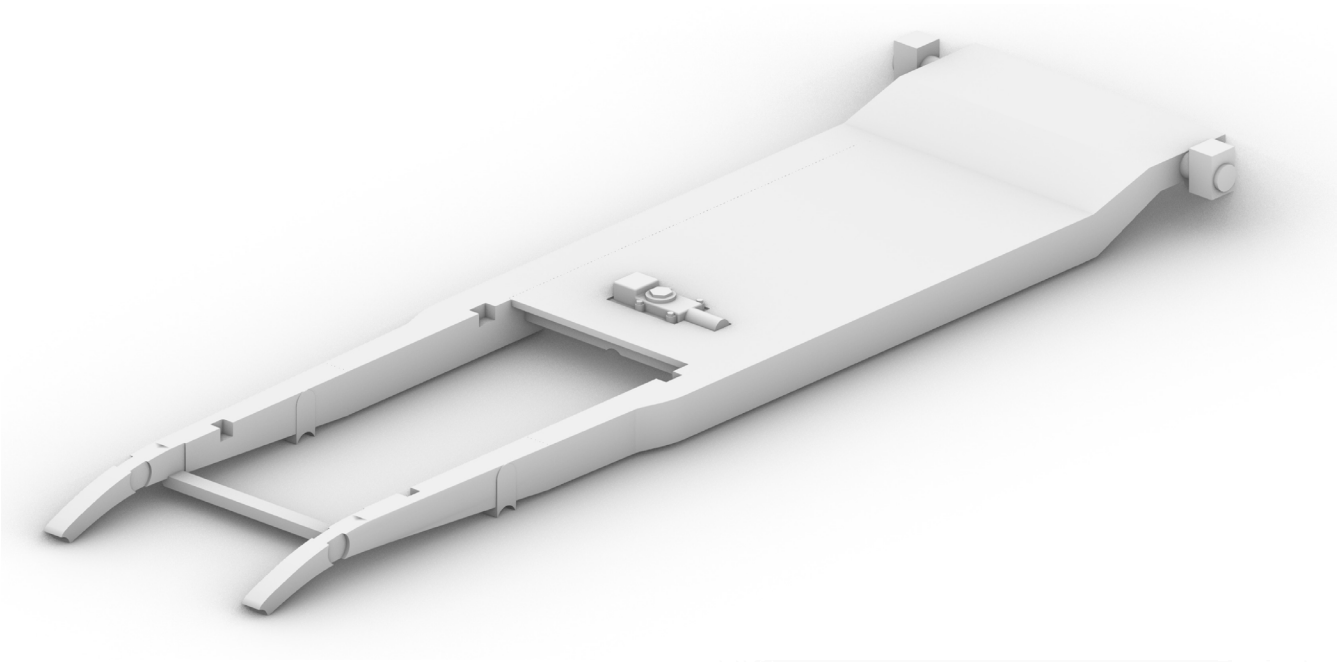
Study the instructions carefully.

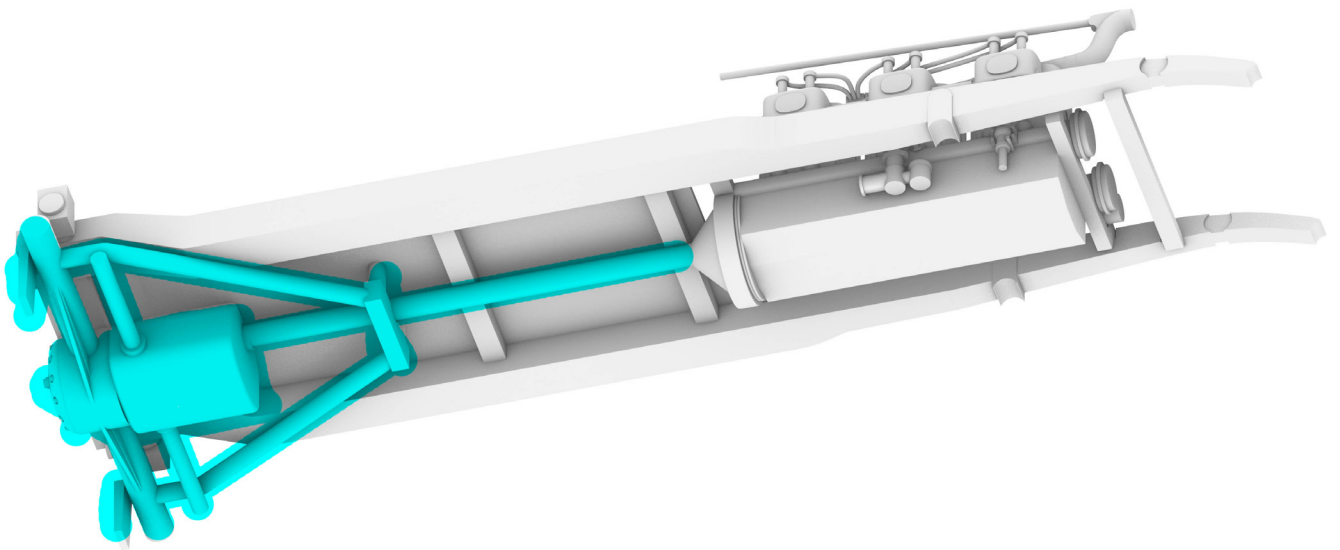
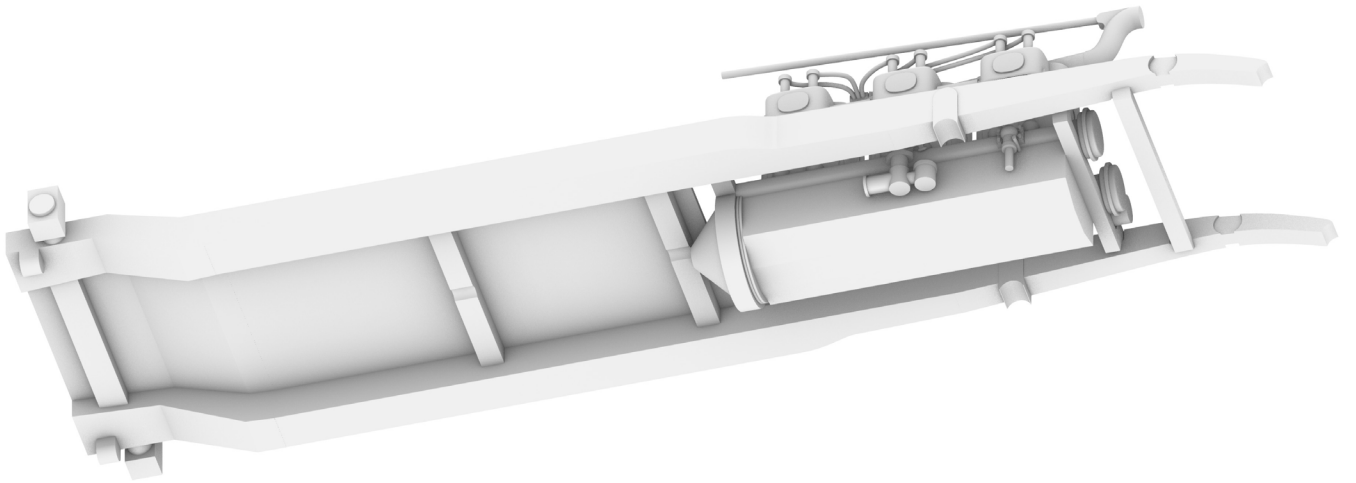
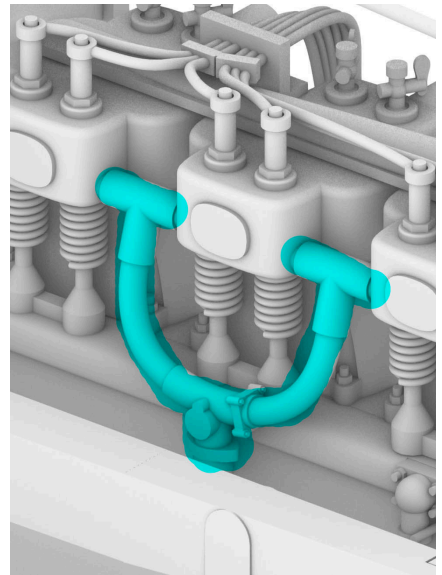
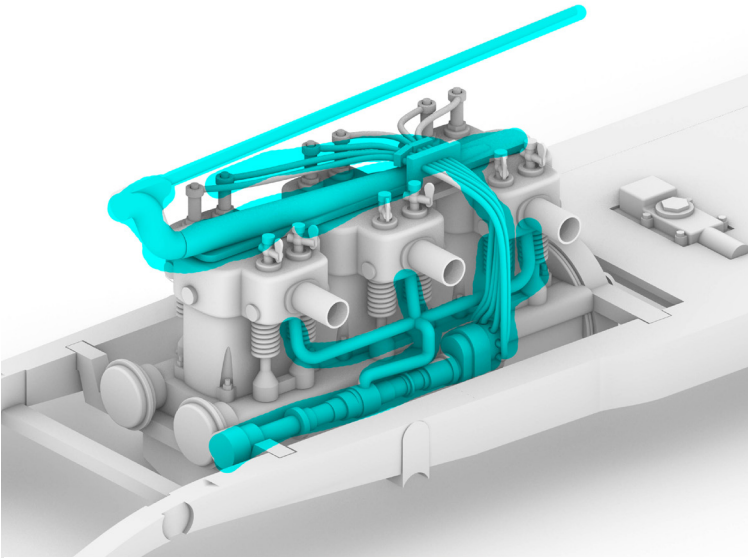
Test fit parts

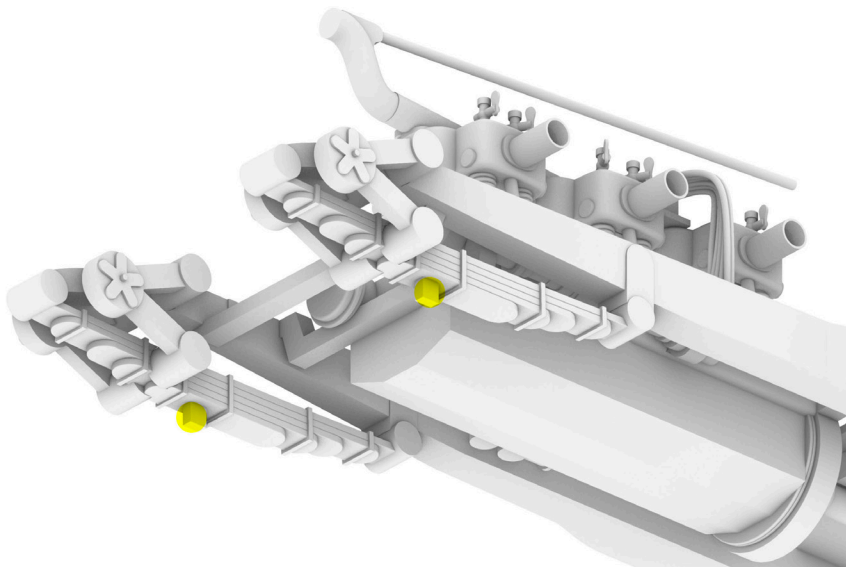
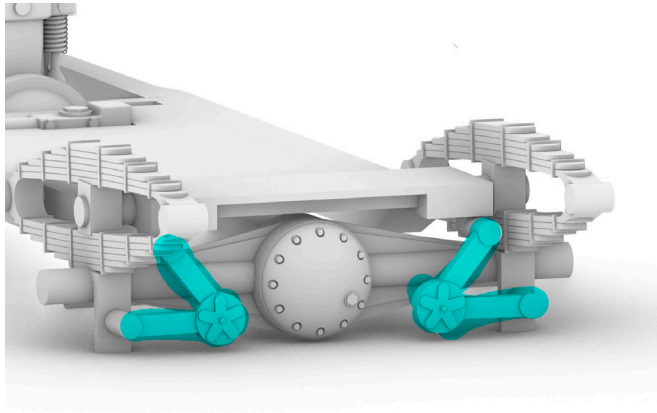
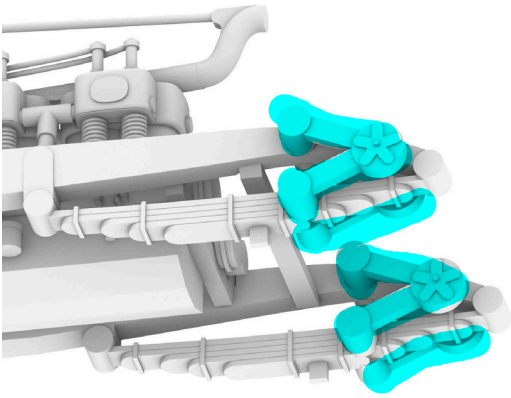
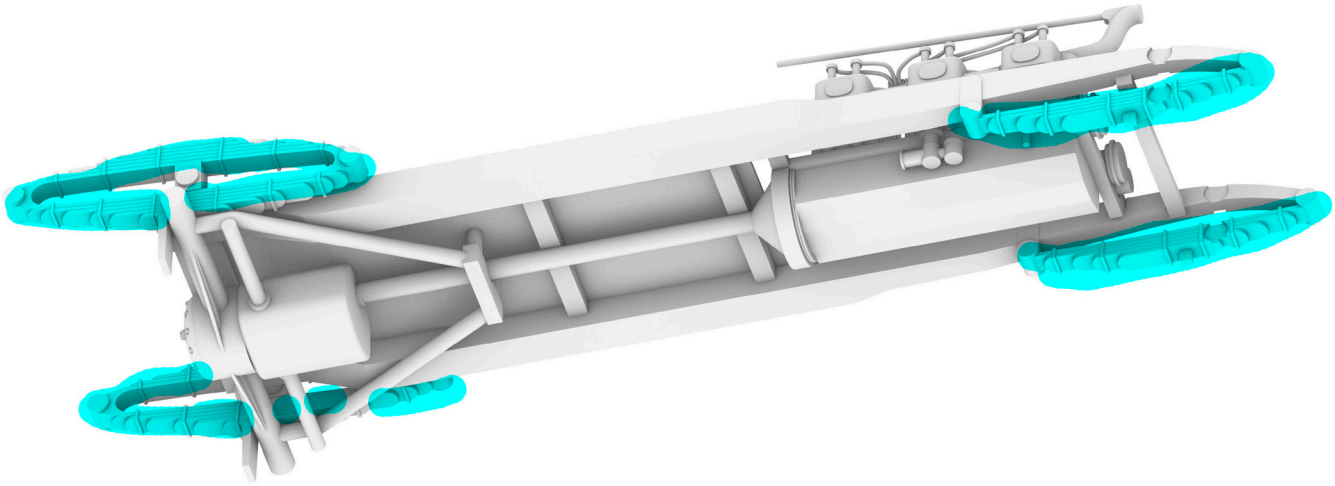
and finally... test fit parts and study the instructions carefully.

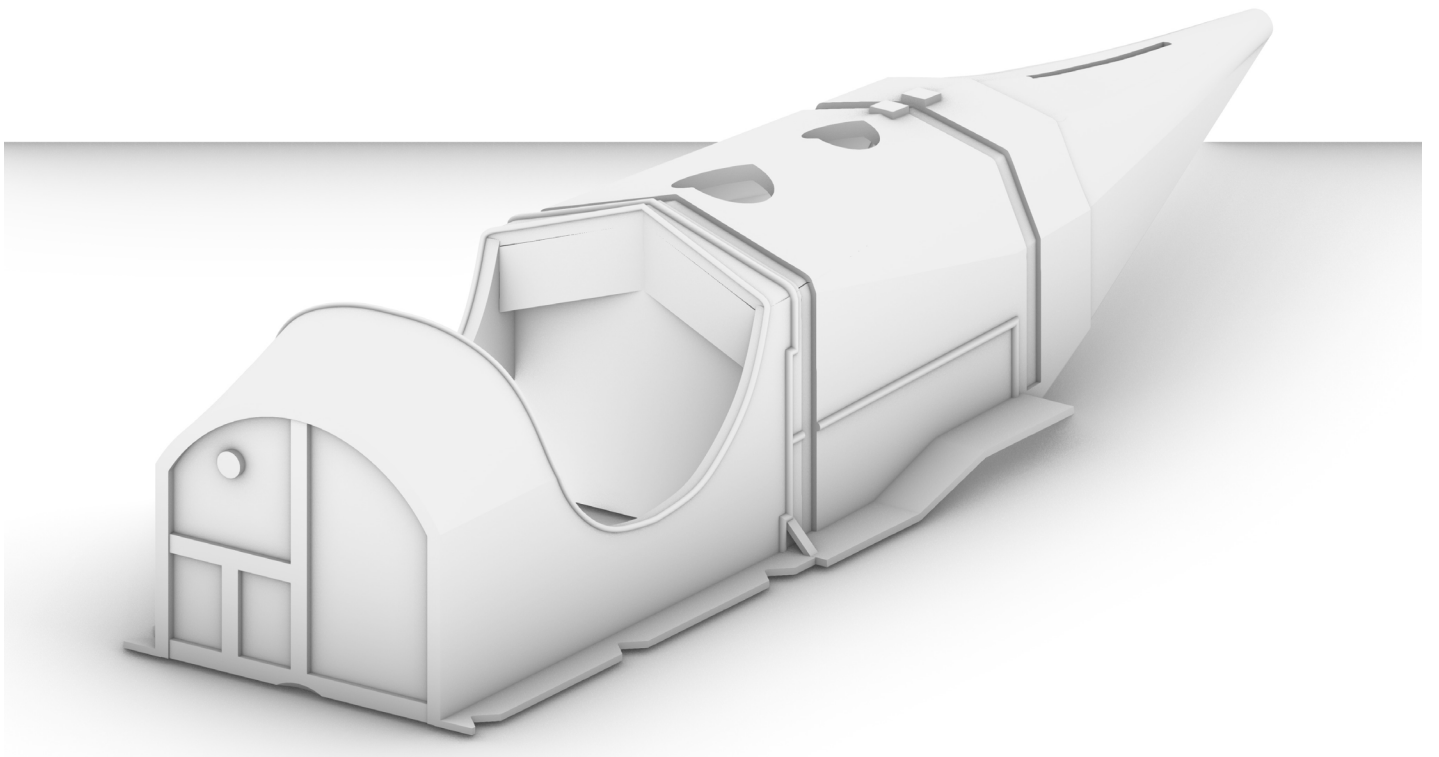
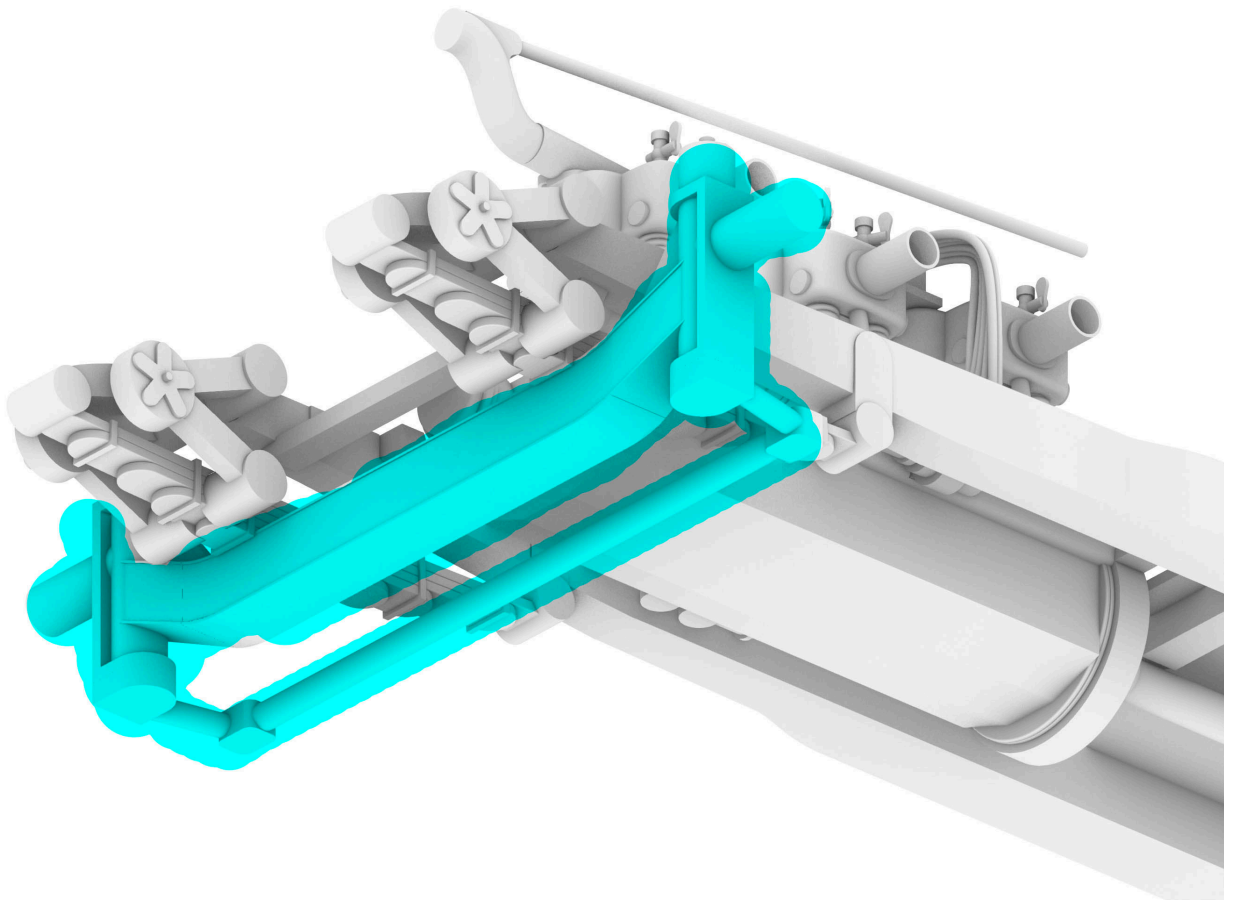
Parts list:

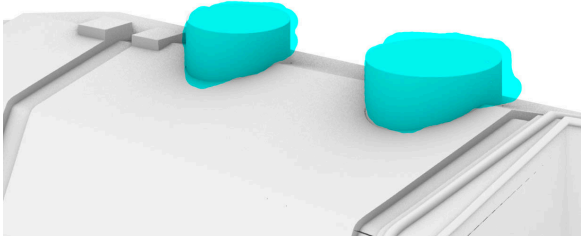
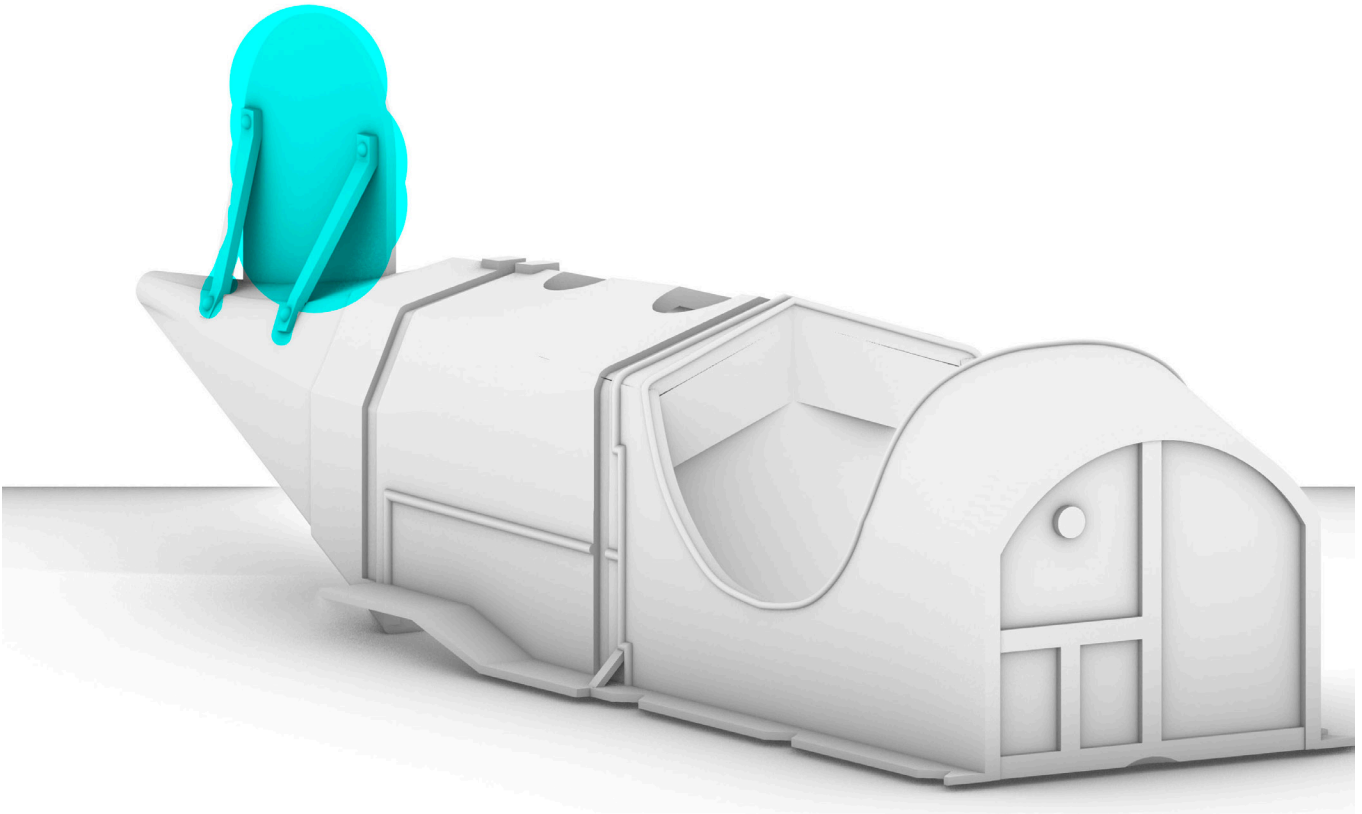


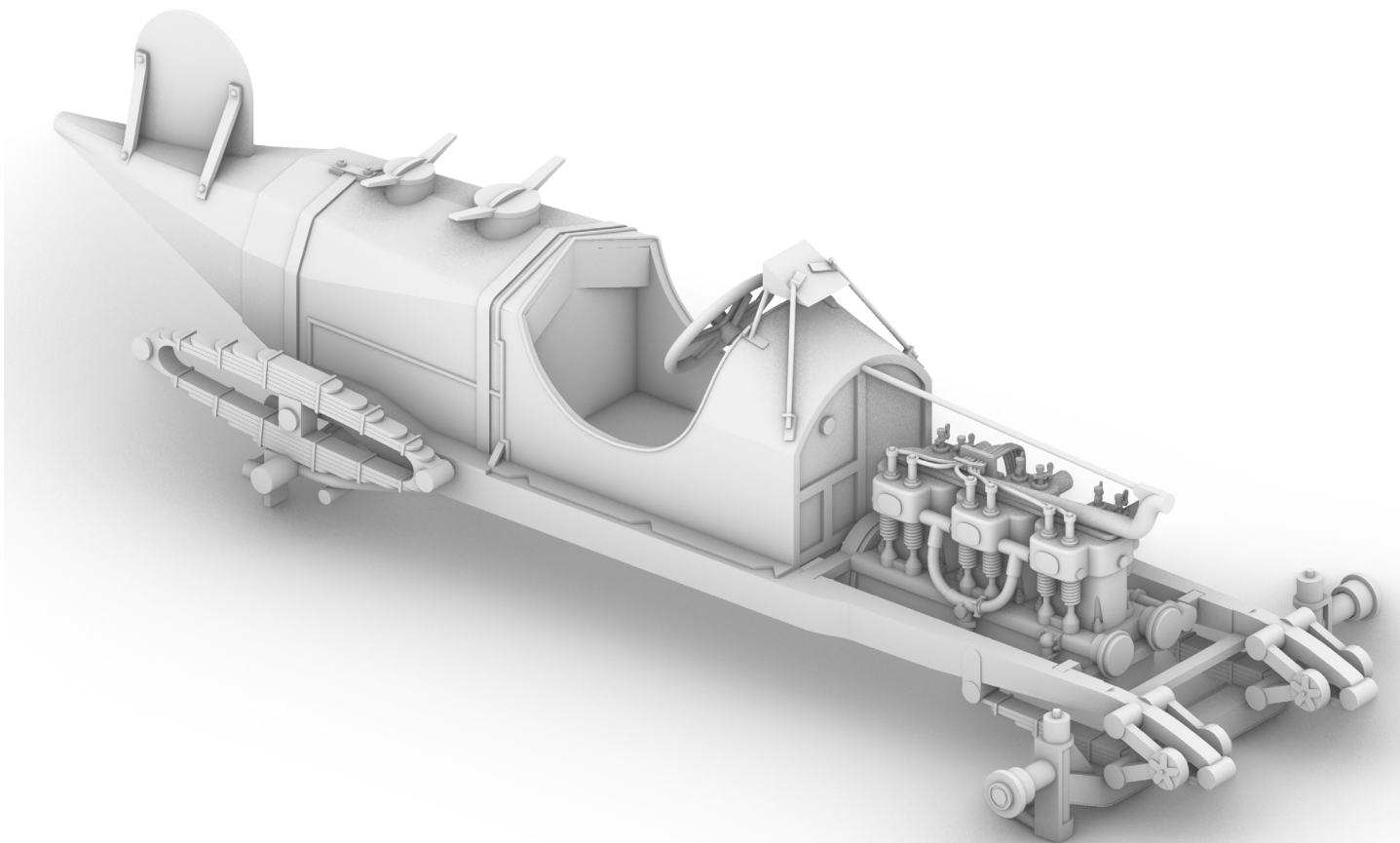
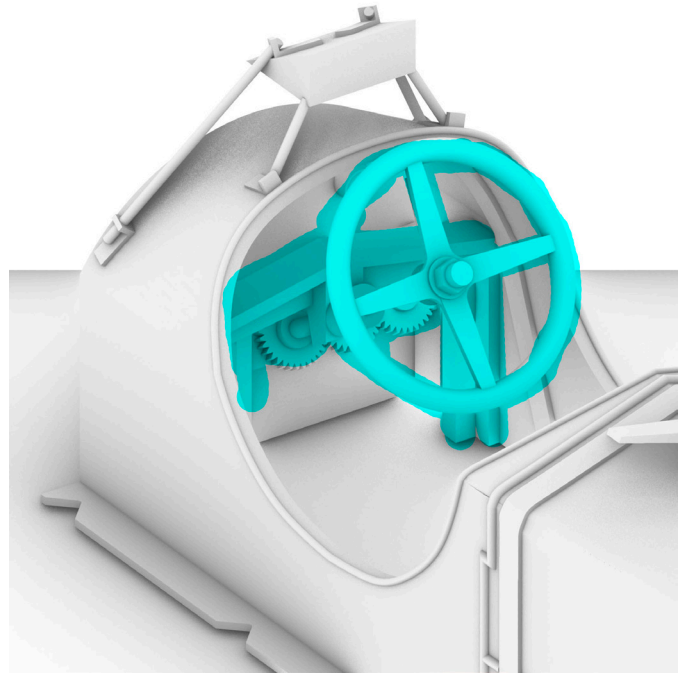
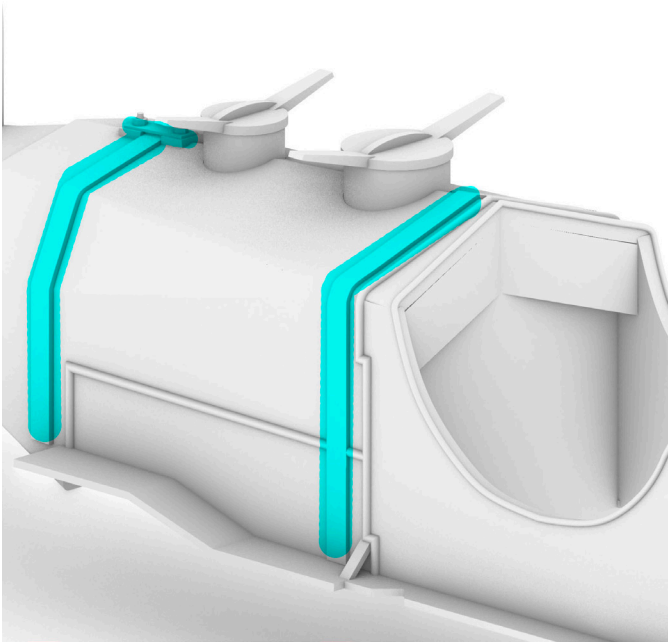


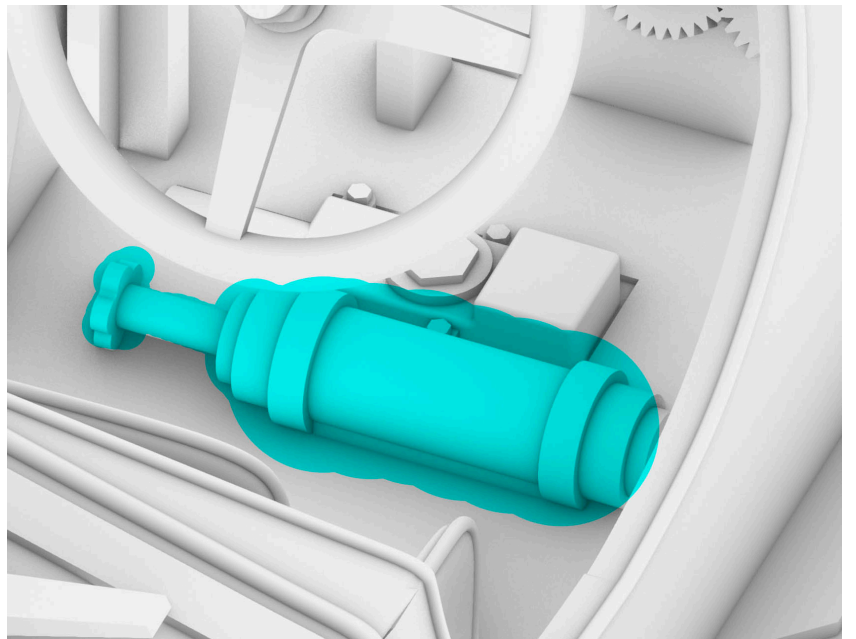
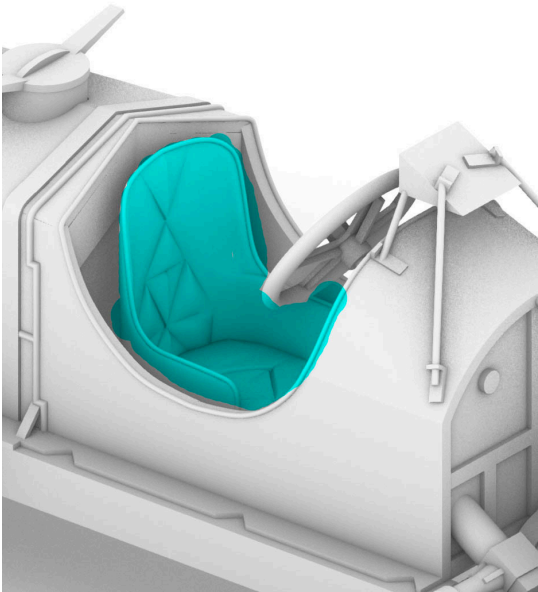
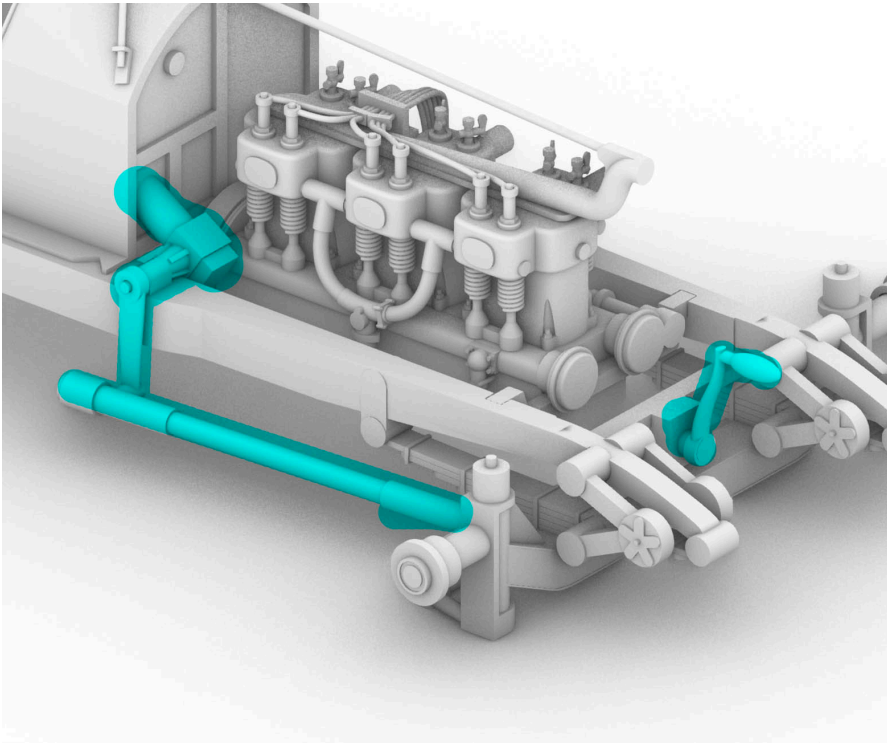


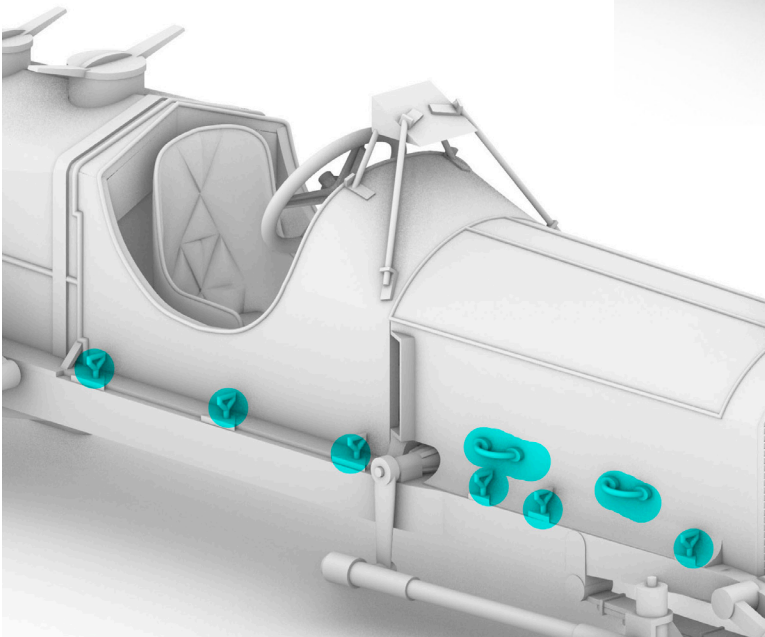
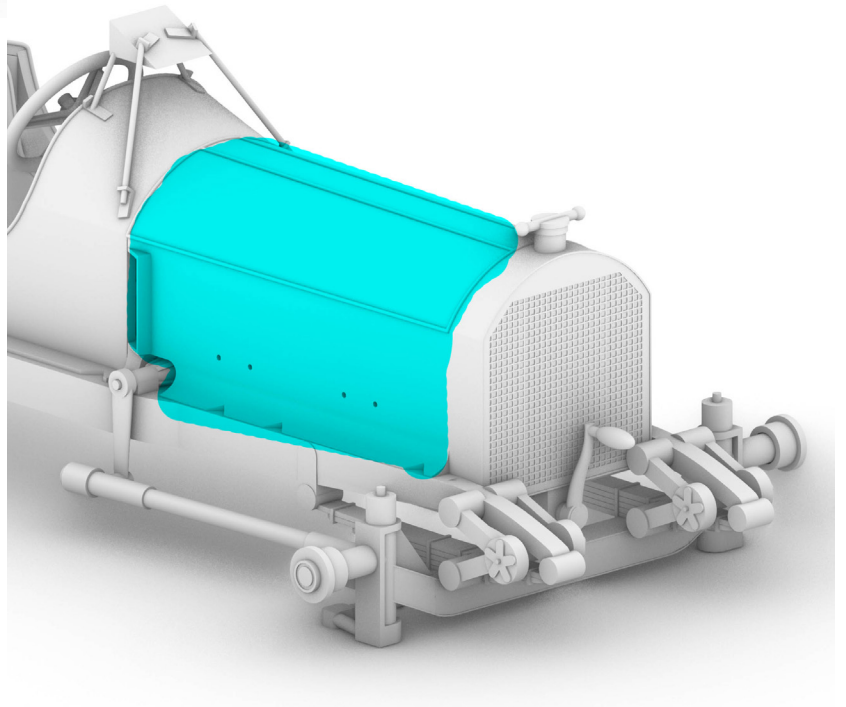
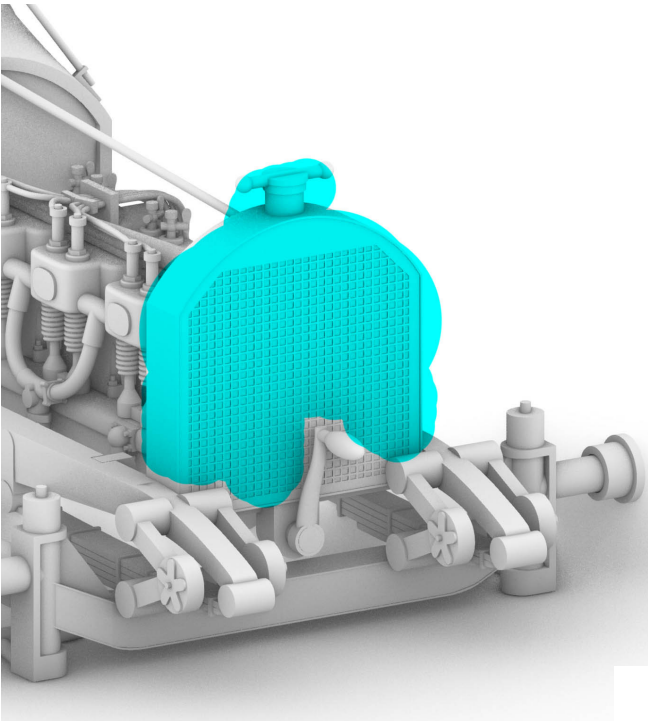


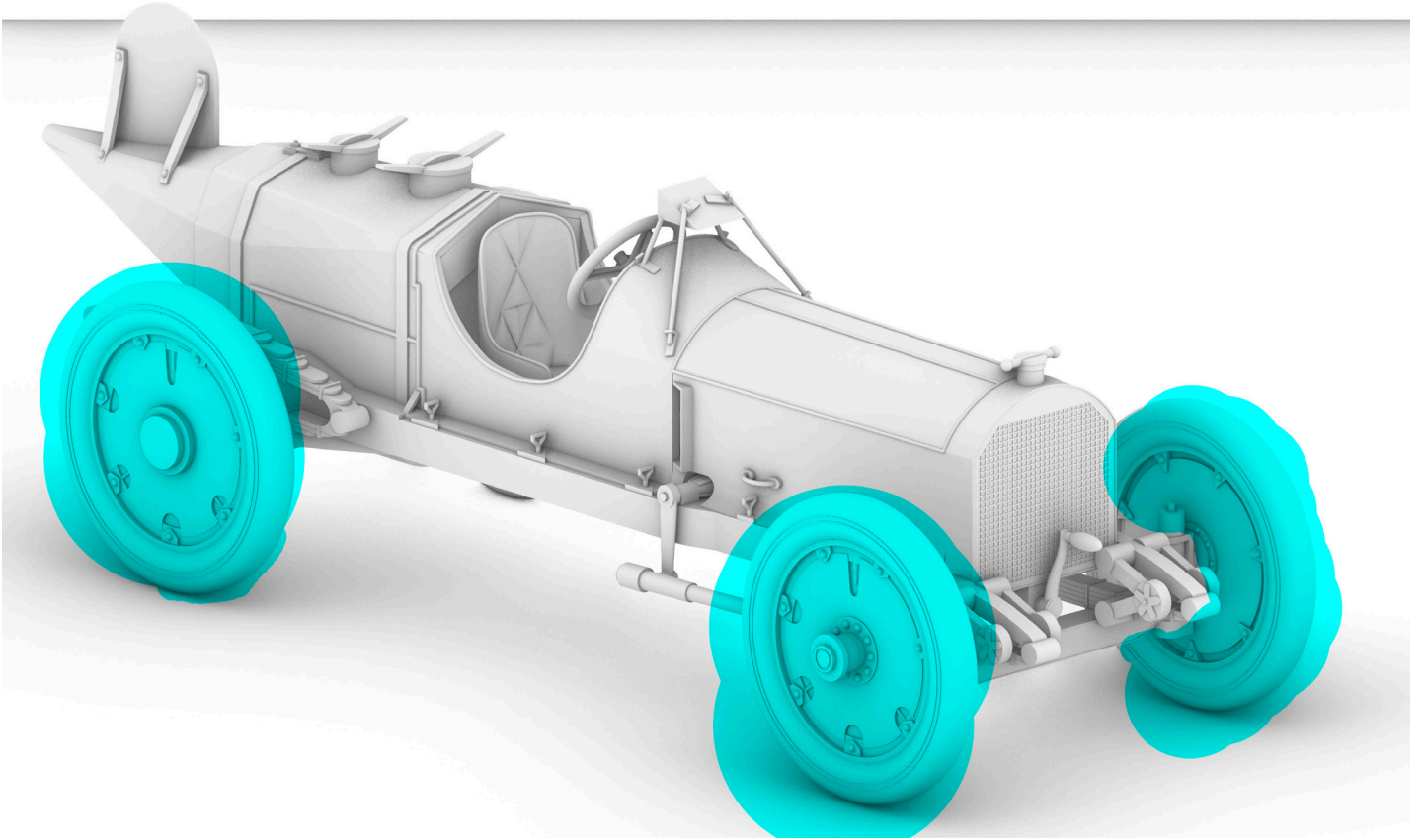




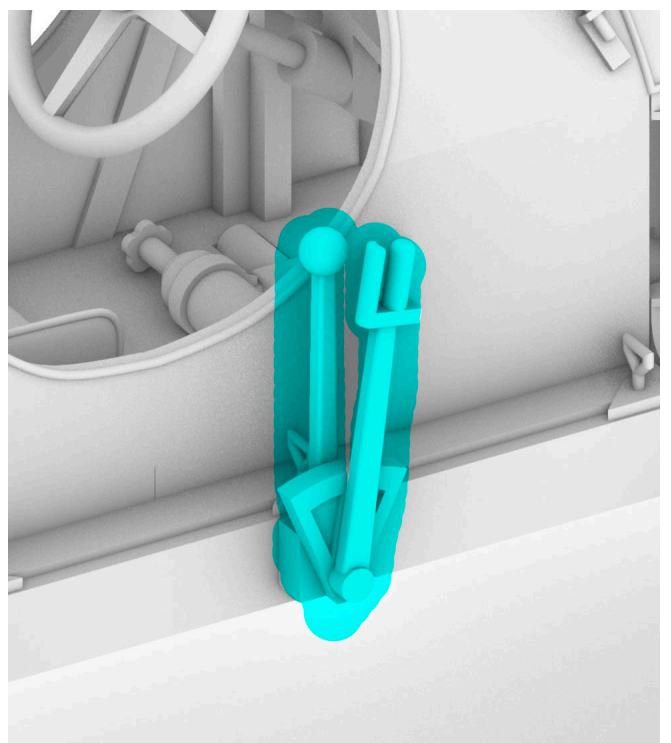
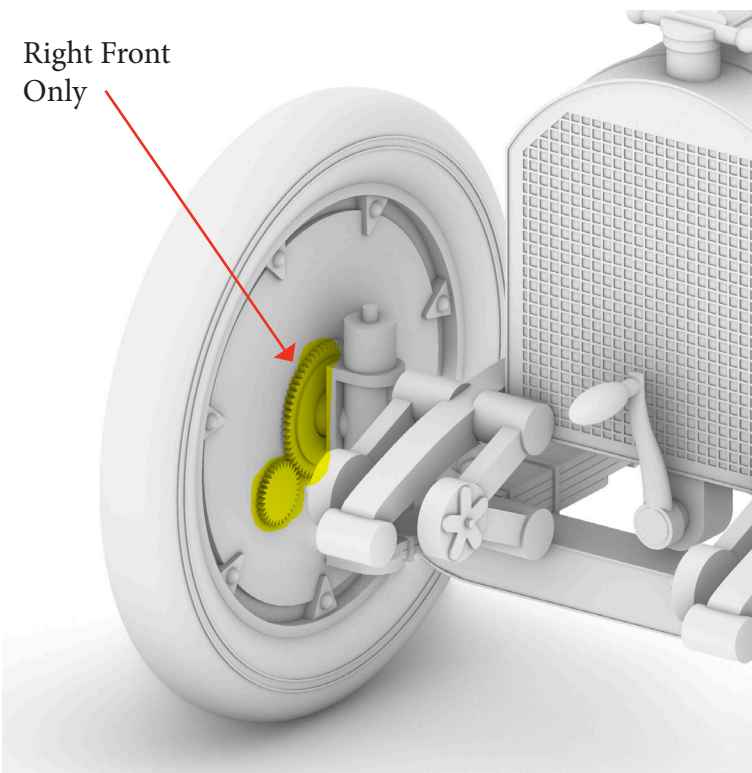


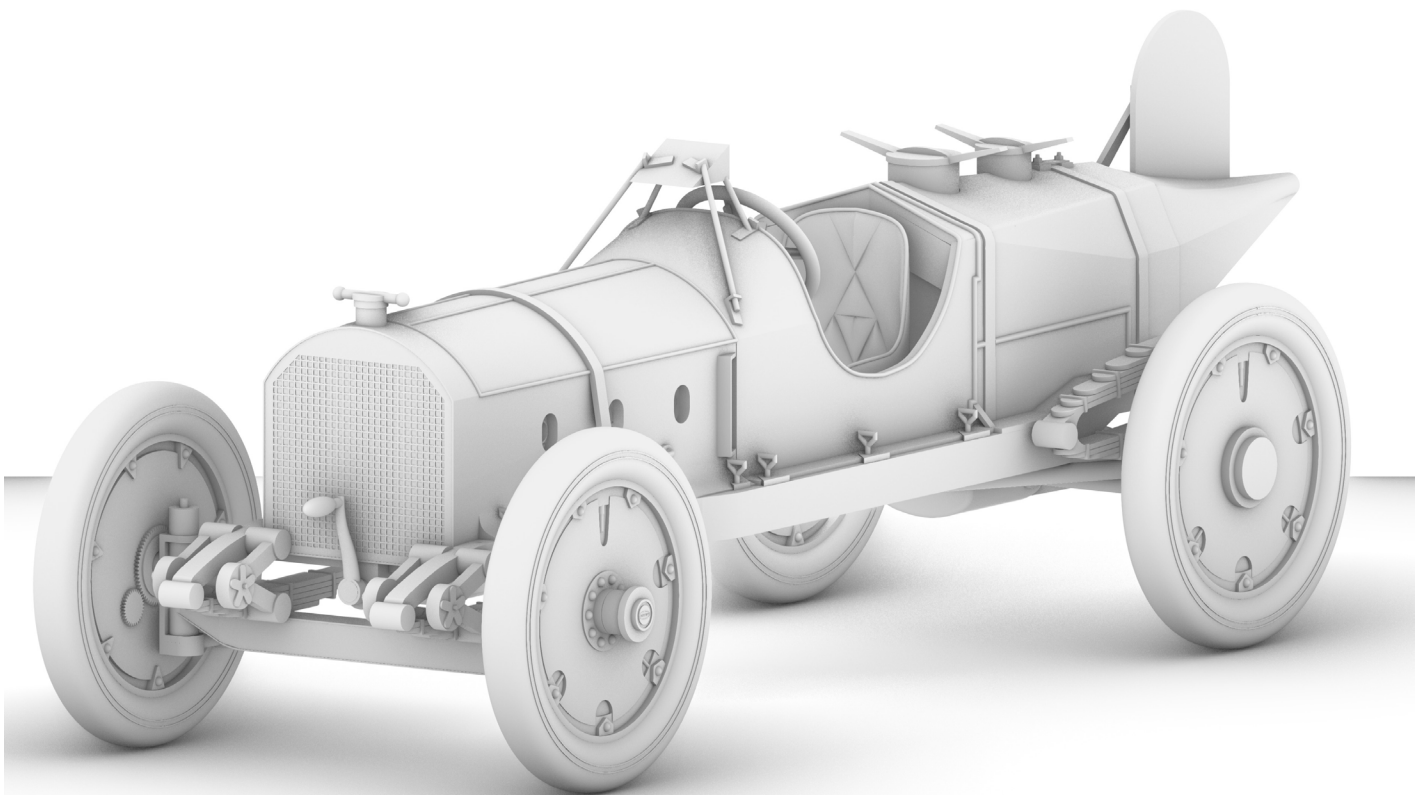
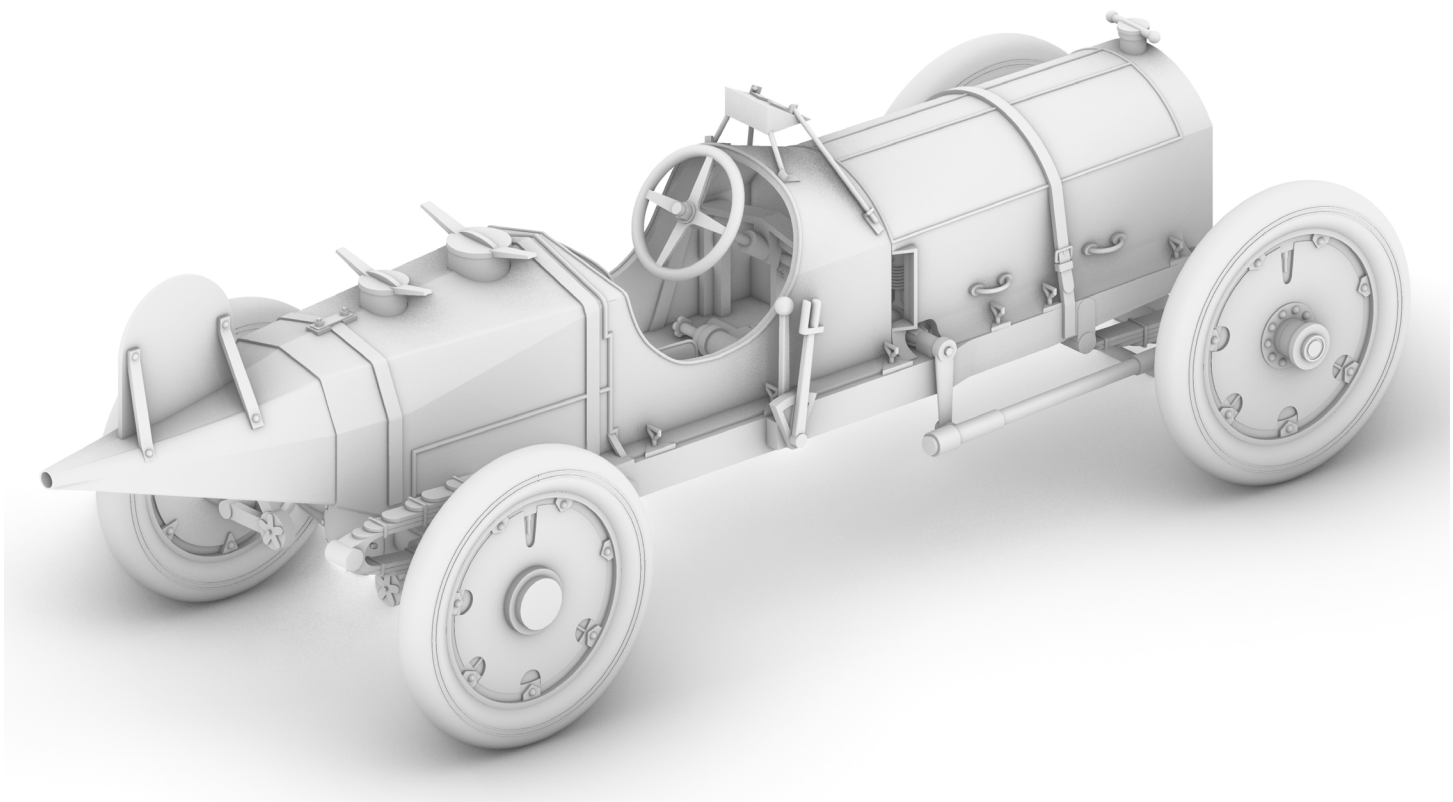


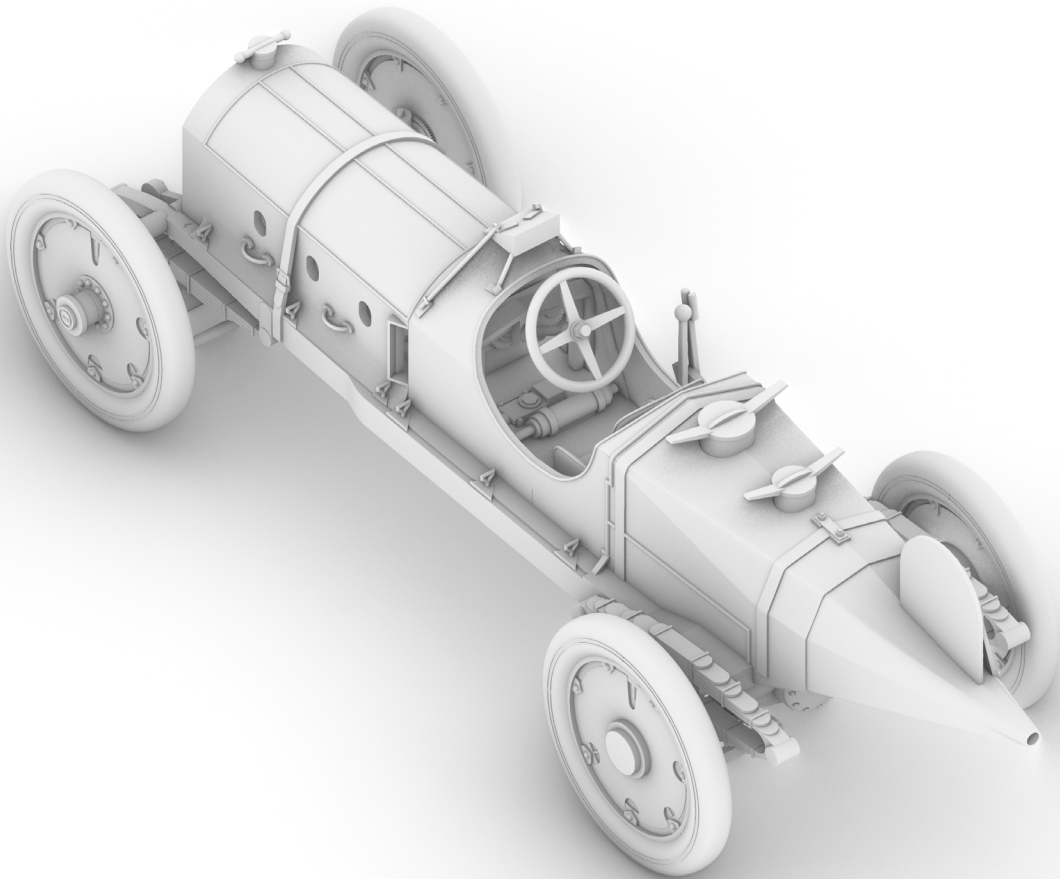
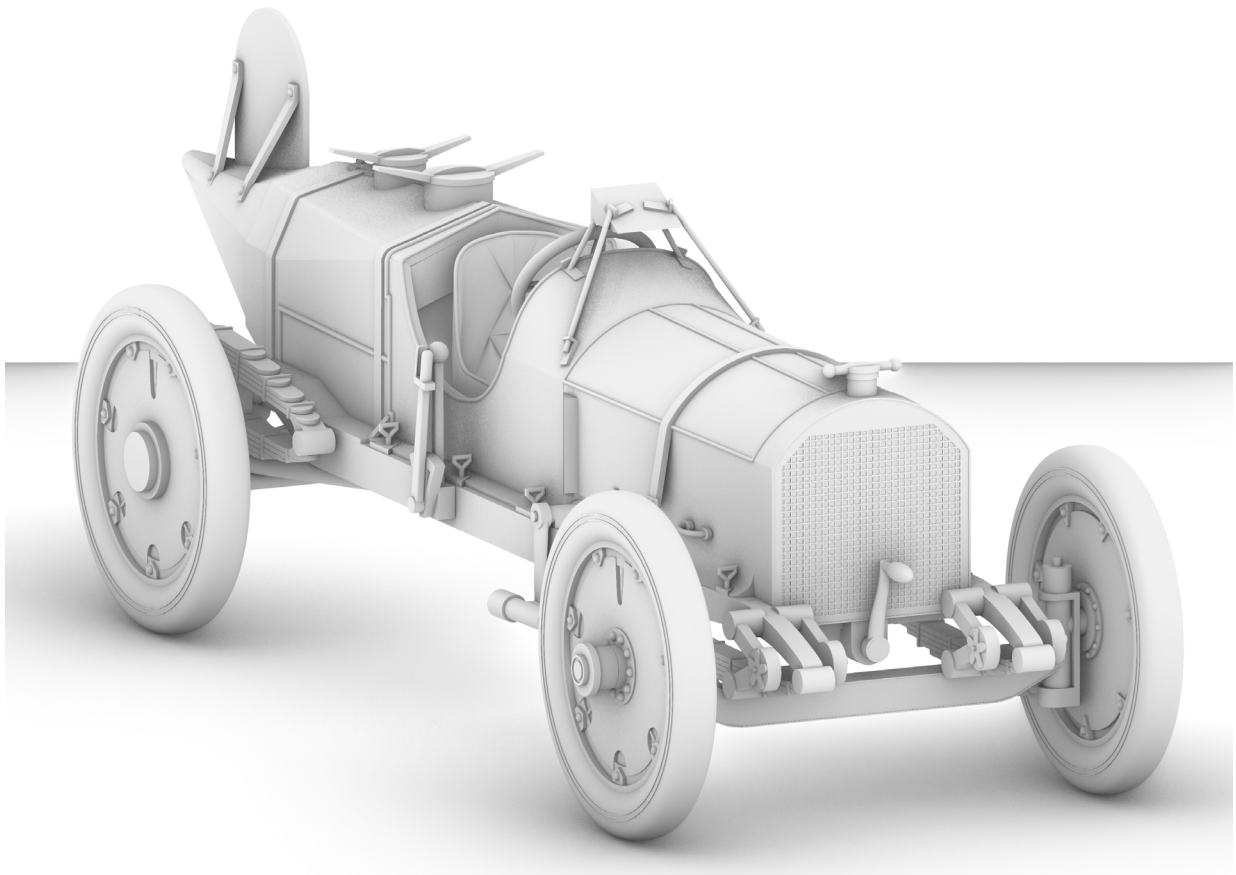


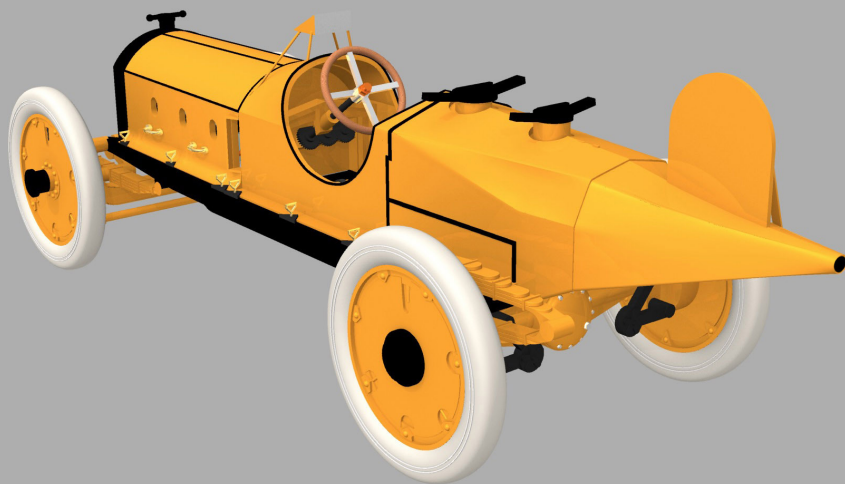
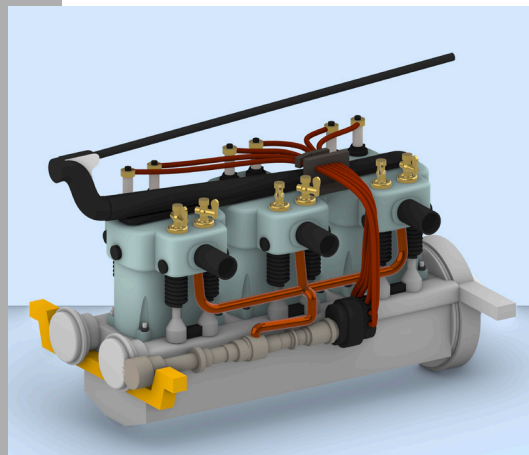
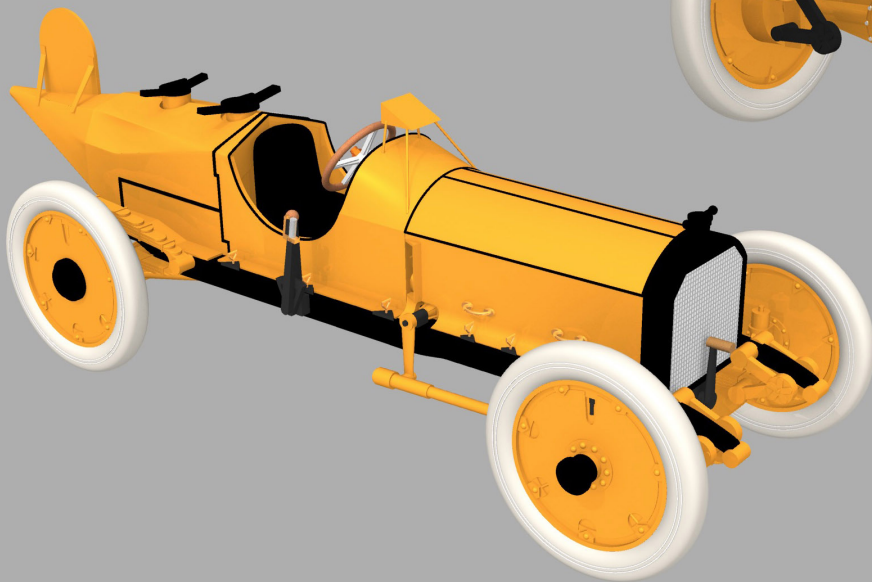
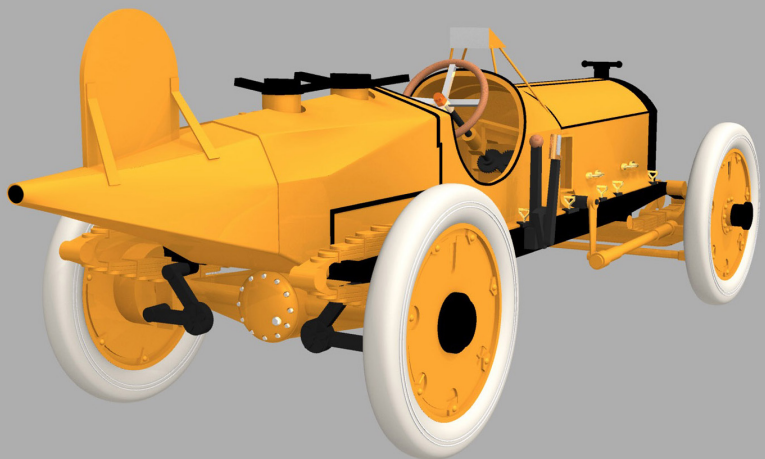
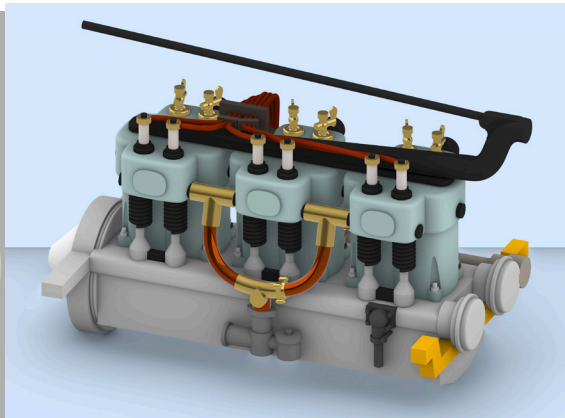
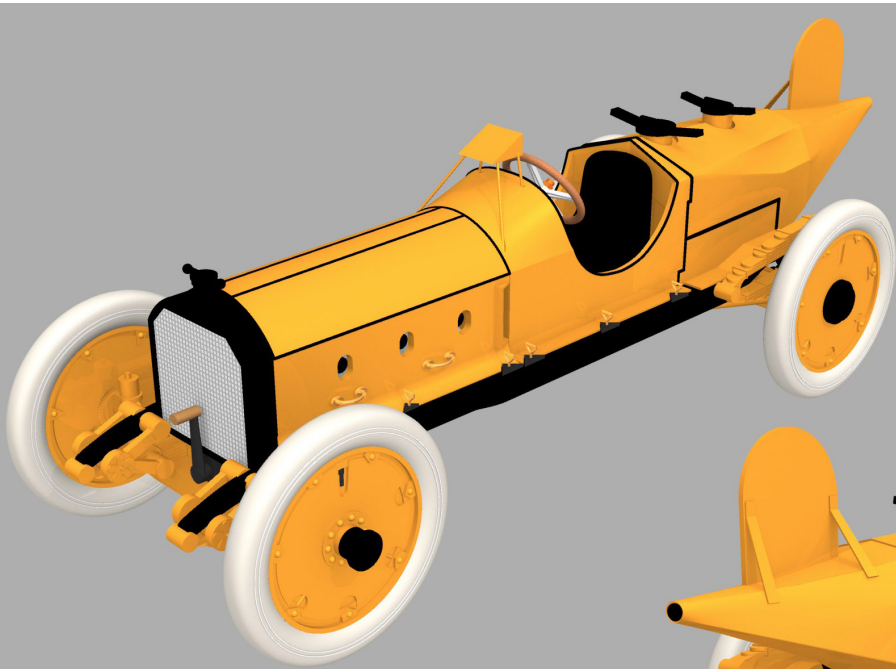


Right Front
Only









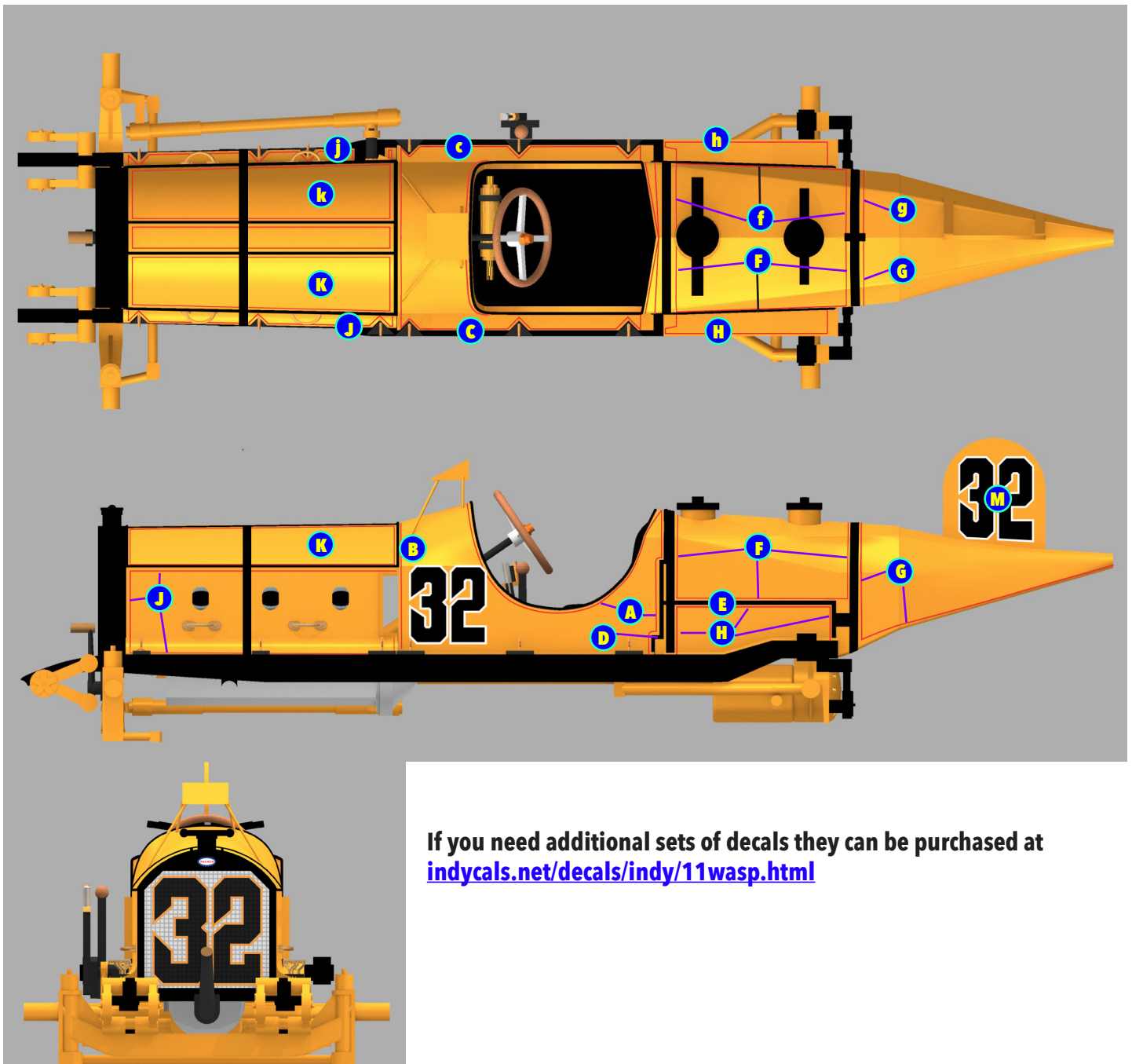
Decal placement

Decals are identified with upper and lower case letters. Upper case letters go on the driver's left side, lower case letters are the corresponding marking for the right side.

Note the magenta color on the decals will turn red when applied to the yellow paint.

The decals are standard water transfer decals. Trim carefully from sheet using a fresh Xacto blade (you will need to trim close to the markings as the decals are not separated on the sheet). Place in warm water for several seconds to loosen and apply to car like normal decals. Setting solutions can be used - we recommend Solvaset.

If you wish to clearcoat your model, select your clearcoat based on the paint you use, but do NOT use enamel clear coat with our decals as it will destroy the white printing. Lacquer and acrylic clearcoats should work. We recommend using setting solution to help bind the decals to the paint to reduce the possibility of wrinkling.



If you need additional sets of decals they can be purchased at indycals.net/decals/indy/11wasp.html

